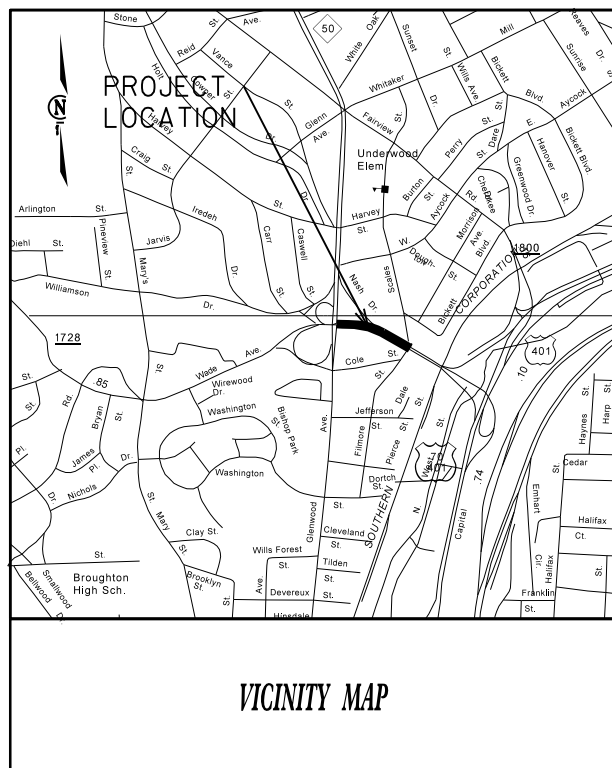


CONTRACT: DE00100 PROJECT: W-5205X

See Sheet 1-A For Index of Sheets
See Sheet 1-B For Conventional Symbols

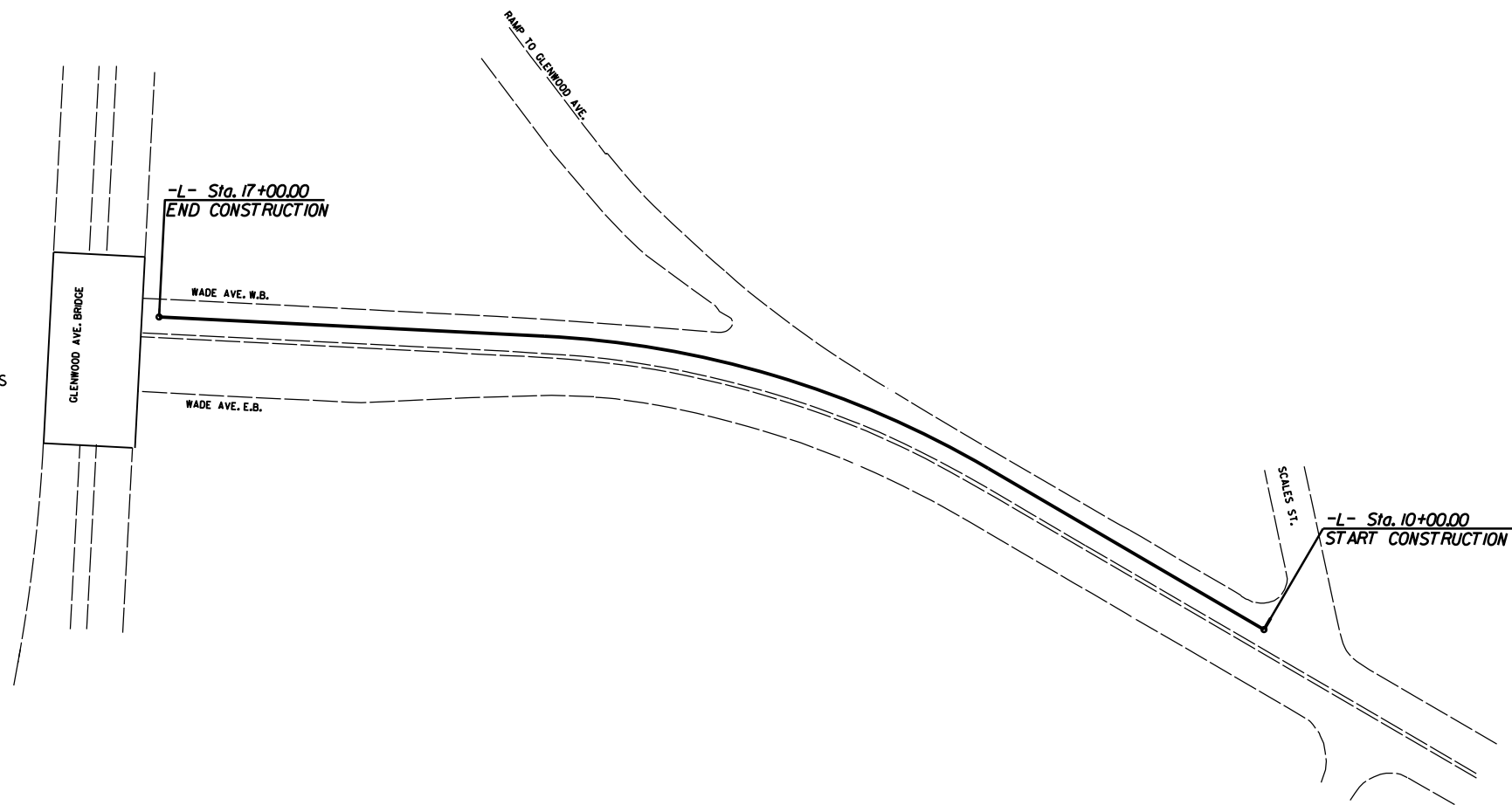


SHEET NUMBER	SHEET
1	TITLE SHEET
2	PAVEMENT SCHEDULE, AND TYPICAL SECTIONS
2B	CURB RAMP DETAIL
4	PLAN SHEET
PM-1	PAVEMENT MARKING PLAN
TMP-1	TRAFFIC MANAGEMENT PLAN

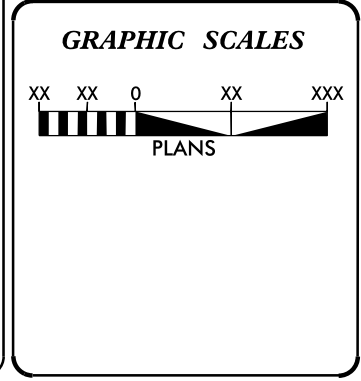
STATE OF NORTH CAROLINA
DIVISION OF HIGHWAYS
WAKE COUNTY

LOCATION: US70/NC50 (W. B. WADE AVE.), FROM SCALES STREET TO US 70 (GLENWOOD AVE.)

TYPE OF WORK: OPEN GRADE FRICTION COURSE PAVEMENT, PAVEMENT MARKING AND CURB RAMPS



STATE	STATE PROJECT REFERENCE NO.	SHEET NO.	TOTAL SHEETS
N.C.	W-5205X	1	
STATE PROJ. NO.	F.A. PROJ. NO.	DESCRIPTION	
45335.1.FR25	HSIP-1728(6)	PE	
45335.3.FR25	HSIP-1728(6)	CONST.	



DESIGN DATA
V = 35 MPH

PROJECT LENGTH

Length Roadway Project W-5205X = 0.13 Miles

Prepared in the Office of:
DIVISION OF HIGHWAYS
2612 N. Duke St., Durham, NC 27704

2012 STANDARD SPECIFICATIONS

LETTING DATE: _____

BEN UPSHAW, P.E.
PROJECT ENGINEER

CHRIS HOFFMAN
PROJECT DESIGN ENGINEER

DIVISION OF HIGHWAYS
STATE OF NORTH CAROLINA

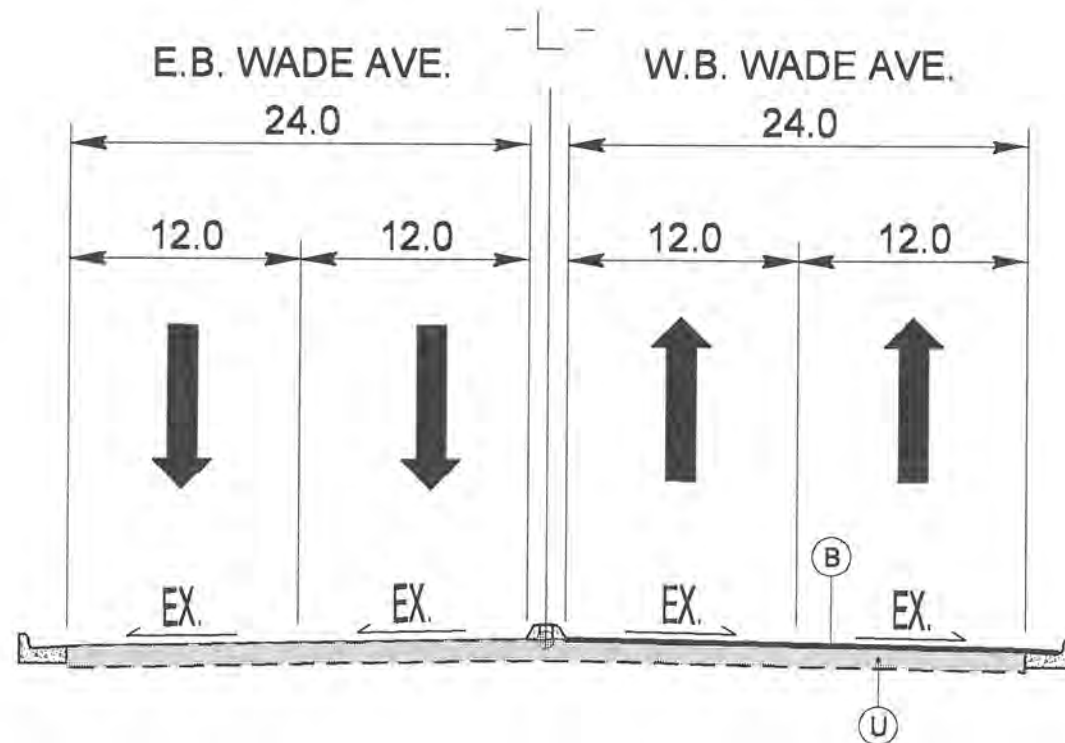
FIFTH DIVISION
J. W. BOWMAN, P.E.
DIVISION ENGINEER

JUN-2014 12:43
R:\Roadway\W-5205X.Rdw - tsh.dgn
F:\mch

****Note:**

FOR END OF PROJECT JOINTS, PROVIDE A TRANSITION AREA CONSISTING OF ONE LOAD OF MIXTURE PER LANE, OR AS DIRECTED. TAPER THE MIXTURE IN THICKNESS FROM $\frac{3}{8}$ " AT THE END OF THE PROJECT TO THE TYPICAL THICKNESS. (APPROXIMATELY $\frac{3}{4}$ ") WITHIN THE MAXIMUM DISTANCE OF SPREAD FOR ONE LOAD OF MIXTURE. (AS REFERENCED FROM STANDARD SPECS. SECTION 650)

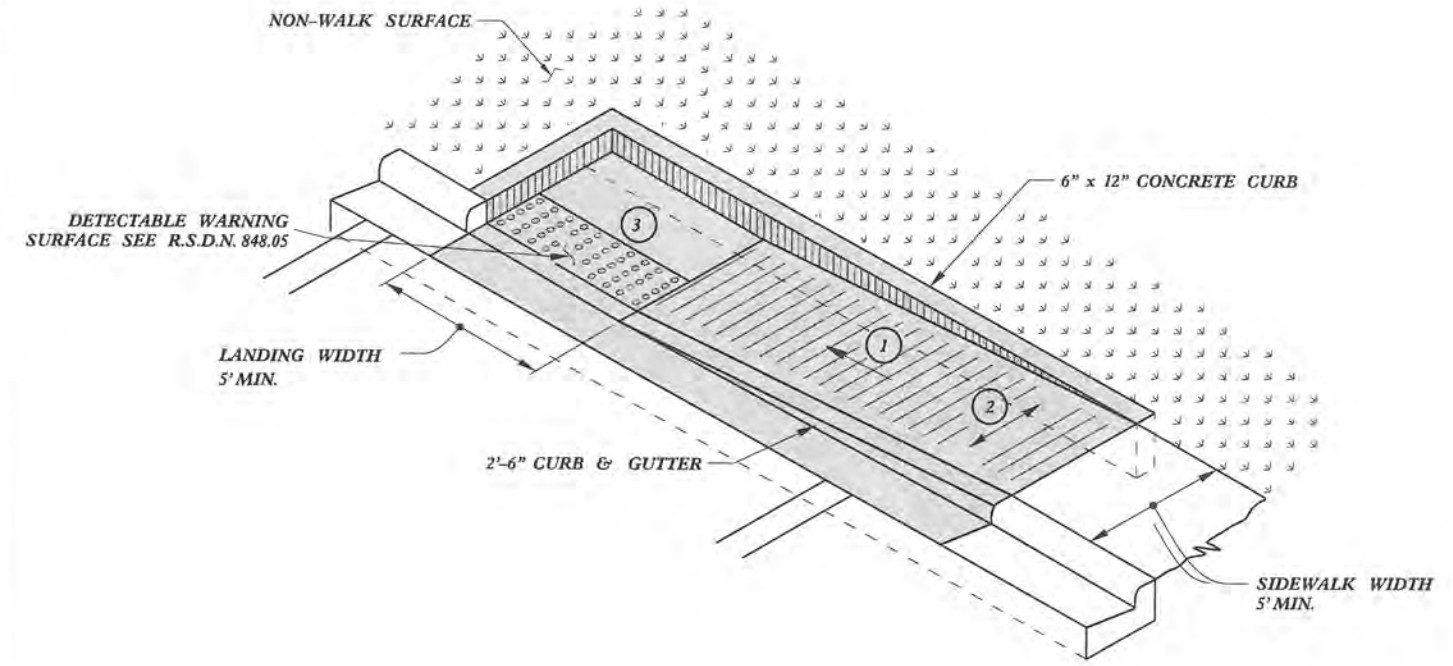
**B	PROP. OPEN-GRADED ASPHALT FRICTION COURSE, TYPE FC-1 Modified, AT AN AVERAGE RATE OF 70 LBS. PER SQ. YD.
U	EXISTING PAVEMENT



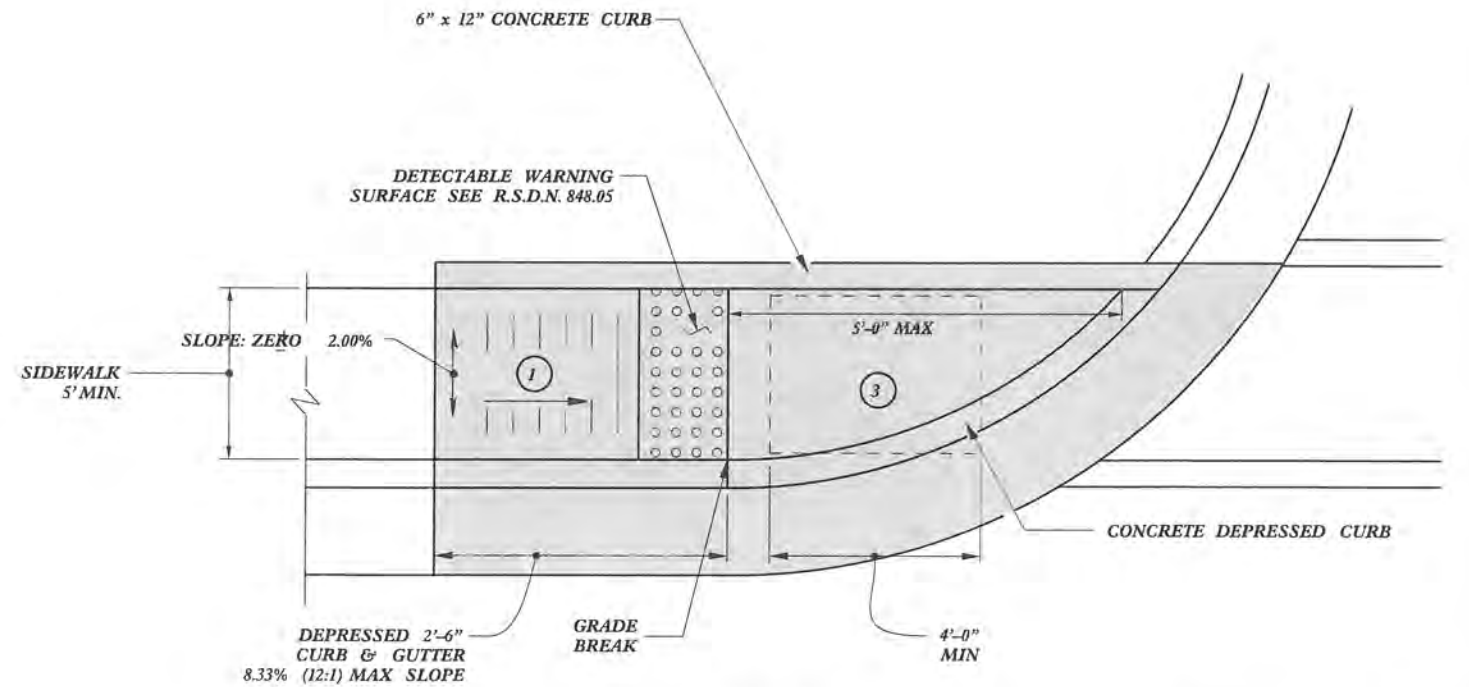
TYPICAL SECTION NO. 1
-L- STA. 10+00.00 to 17+00.00

W.B. WADE AVE. OPEN GRADE FRICTION COURSE		
DIVISION 05 WAKE COUNTY		
REVISIONS	INT.	DATE
N.C. DEPARTMENT of TRANSPORTATION DIVISION of HIGHWAYS DIVISION FIVE DESIGN UNIT		SCALE: NTS DATE: APR 24 2014 PREPARED BY: CAH REVIEWED BY: BJU

PAY LIMITS FOR CURB RAMP



TYPE 1A



TYPE 1

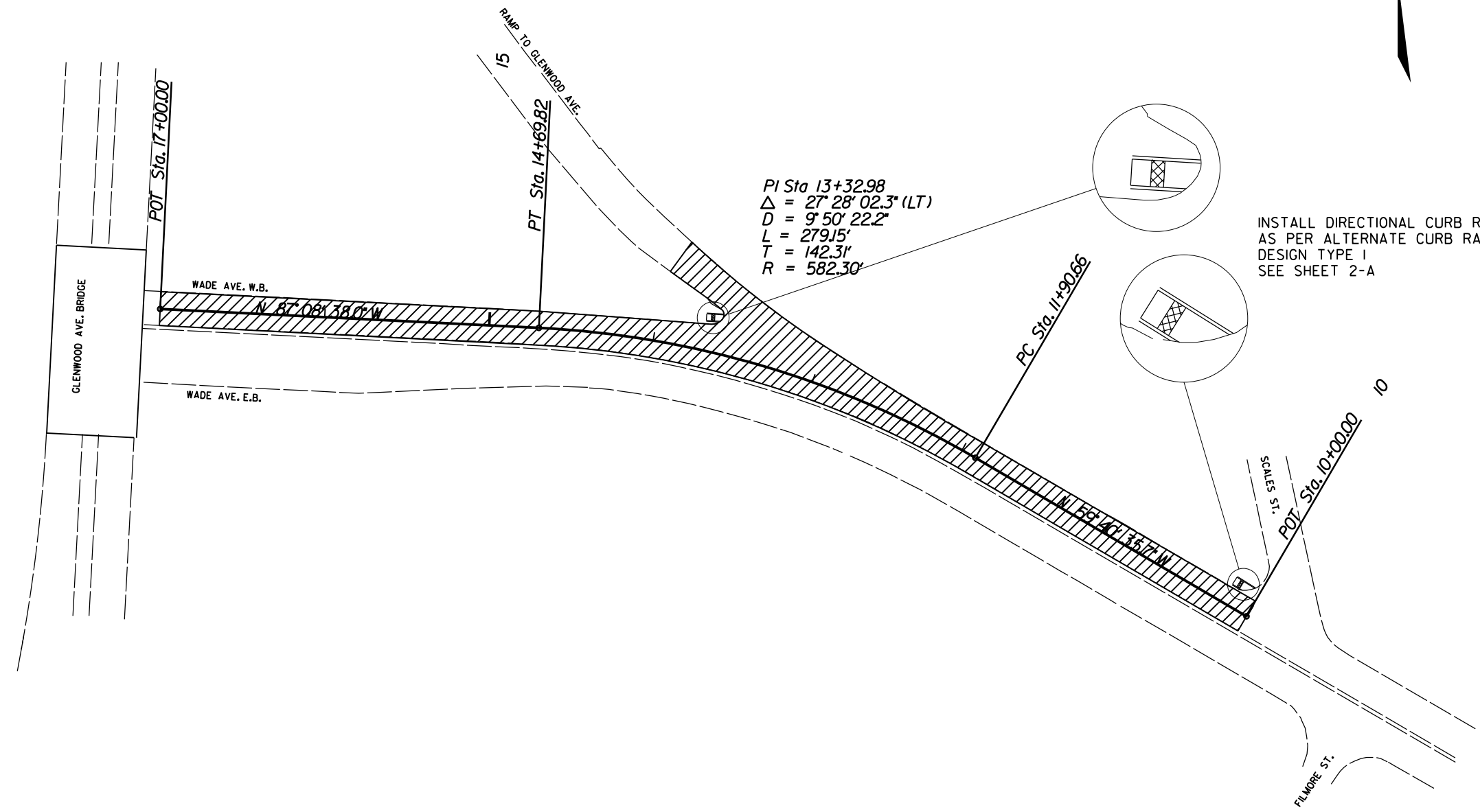
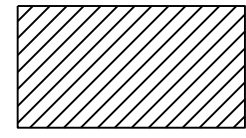
- 1 8.33% (12:1) MAX RAMP SLOPE
- 2 CROSS SLOPE: 2.00%
- 3 CURB RAMPS REQUIRE A (4'-0") MINIMUM LANDING WITH A MAXIMUM CROSS SLOPE AND LONGITUDINAL SLOPE OF 2.00% WHERE PEDESTRIANS PERFORM TURNING MANEUVERS. SLOPE TO DRAIN TO CURB.

REFER TO ROADWAY STANDARD DRAWING NUMBER 848.05 SHEET 3 OF 3 FOR ALL RAMP NOTES

CONTRACT STANDARDS AND DEVELOPMENT UNIT	
Office 919-707-6950	FAX 919-250-4119
CURB RAMPS	
Directional Ramps	
ORIGINAL BY: J.S. HOWERTON	DATE: 7/7/11
MODIFIED BY: _____	DATE: _____
CHECKED BY: _____	DATE: _____
FILE SPEC: stds/2012CurbRamp/CurbRampDetails.dgn	

22-MAR-2012 15:06
 S:\Contracts\2012\Standard Drawings\2012 Standard Drawings\2012 Curb Ramp Special Details\Curb Ramp Details.dgn
 J:\Howerton

PROPOSED OPEN GRADE
FRICTION COURSE (FC-1Modified)



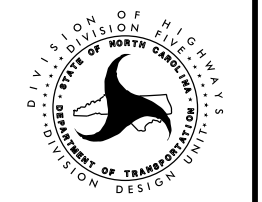
INSTALL DIRECTIONAL CURB RAMPS
AS PER ALTERNATE CURB RAMP
DESIGN TYPE 1
SEE SHEET 2-A

**W.B. WADE AVE.
OPEN GRADE FRICTION COURSE**

DIVISION 05 WAKE COUNTY

REVISIONS	INIT.	DATE

N.C. DEPARTMENT of TRANSPORTATION
DIVISION of HIGHWAYS
DIVISION FIVE DESIGN UNIT



SCALE: 40'-1" DATE: APR 14 2014
 PREPARED BY: CAH
 REVIEWED BY: BJU

STATE OF NORTH CAROLINA
DIVISION OF HIGHWAYS

STATE PROJECT REFERENCE NO.		SHEET NO.
W-5205X		TMP-1
STATE PROJ. NO.	F.A. PROJ. NO.	DESCRIPTION
45335.1.FR25	HSIP-1728(6)	P.E.
45335.3.FR25	HSIP-1728(6)	CONST.

TRANSPORTATION MANAGEMENT PLAN
WAKE COUNTY

ROADWAY STANDARD DRAWINGS

REV. SEPTEMBER 2011

ROADWAY STANDARD DRAWINGS

THE FOLLOWING ROADWAY STANDARDS AS APPEAR IN "ROADWAY STANDARD DRAWINGS" - PROJECT SERVICES UNIT - N.C. DEPARTMENT OF TRANSPORTATION - RALEIGH, N.C., DATED JANUARY 2012 ARE APPLICABLE TO THIS PROJECT AND BY REFERENCE HEREBY ARE CONSIDERED A PART OF THESE PLANS:

STD.NO.	TITLE
1101.01	WORK ZONE WARNING SIGNS
1101.02	TEMPORARY LANE CLOSURES
1101.04	TEMPORARY SHOULDER CLOSURES
1101.11	TRAFFIC CONTROL DESIGN TABLES
1110.02	PORTABLE WORK ZONE SIGNS
1115.01	FLASHING ARROW BOARDS
1130.01	DRUMS
1165.01	WORK VEHICLE LIGHTING SYSTEMS AND TMA DELINEATION
1205.01	PAVEMENT MARKINGS - LINE TYPES AND OFFSETS
1205.02	PAVEMENT MARKINGS - TWO LANE AND MULTILANE ROADWAYS

INDEX OF SHEETS

SHEET NO.	TITLE
TMP-1	TITLE SHEET, ROADWAY STANDARDS, GENERAL NOTES AND LEGEND

GENERAL NOTES

CHANGES MAY BE REQUIRED WHEN PHYSICAL DIMENSIONS IN THE DETAIL DRAWINGS, STANDARD DETAILS, AND ROADWAY DETAILS ARE NOT ATTAINABLE TO MEET FIELD CONDITIONS OR RESULT IN DUPLICATE OR UNDESIRED OVERLAPPING OF DEVICES. MODIFICATION MAY INCLUDE: MOVING, SUPPLEMENTING, COVERING, OR REMOVAL OF DEVICES AS DIRECTED BY THE ENGINEER.

THE FOLLOWING GENERAL NOTES APPLY AT ALL TIMES FOR THE DURATION OF THE CONSTRUCTION PROJECT EXCEPT WHEN OTHERWISE NOTED IN THE PLAN OR DIRECTED BY THE ENGINEER.

TIME RESTRICTIONS

A) DO NOT CLOSE OR NARROW TRAVEL LANES AS FOLLOWS:

ROAD NAME	DAY AND TIME RESTRICTIONS
SR 1728 (W.B. WADE AVENUE)	MON. THRU FRI. 6 AM TO 9 AM AND 4 PM TO 7 PM

LANE AND SHOULDER CLOSURE REQUIREMENTS

- B) REMOVE LANE CLOSURE DEVICES FROM THE LANE WHEN WORK IS NOT BEING PERFORMED BEHIND THE LANE CLOSURE OR WHEN A LANE CLOSURE IS NO LONGER NEEDED OR AS DIRECTED BY THE ENGINEER.
- C) WHEN PERSONNEL AND/OR EQUIPMENT ARE WORKING WITHIN 15 FT OF AN OPEN TRAVEL LANE, CLOSE THE NEAREST OPEN SHOULDER USING ROADWAY STANDARD DRAWING NO. 1101.04 UNLESS THE WORK AREA IS PROTECTED BY BARRIER OR GUARDRAIL OR A LANE CLOSURE IS INSTALLED.
- D) WHEN PERSONNEL AND/OR EQUIPMENT ARE WORKING ON THE SHOULDER ADJACENT TO AN UNDIVIDED FACILITY AND WITHIN 5 FT OF AN OPEN TRAVEL LANE, CLOSE THE NEAREST OPEN TRAVEL LANE USING ROADWAY STANDARD DRAWING NO. 1101.02 UNLESS THE WORK AREA IS PROTECTED BY BARRIER OR GUARDRAIL.

WHEN PERSONNEL AND/OR EQUIPMENT ARE WORKING ON THE SHOULDER ADJACENT TO A DIVIDED FACILITY AND WITHIN 10 FT OF AN OPEN TRAVEL LANE, CLOSE THE NEAREST OPEN TRAVEL LANE USING ROADWAY STANDARD DRAWING NO. 1101.02 UNLESS THE WORK AREA IS PROTECTED BY BARRIER OR GUARDRAIL.

- E) INSTALL ADVANCE WORK ZONE WARNING SIGNS WHEN WORK IS WITHIN 40 FT FROM THE EDGE OF TRAVEL LANE AND NO MORE THAN THREE (3) DAYS PRIOR TO THE BEGINNING OF CONSTRUCTION.
- F) TIE PROPOSED PAVEMENT MARKING LINES TO EXISTING PAVEMENT MARKING LINES.

LEGEND

GENERAL

- DIRECTION OF TRAFFIC FLOW
- NORTH ARROW
- PROPOSED PVMT. EXIST. PVMT.
- WORK AREA
- REMOVAL OF EXISTING PAVEMENT

TRAFFIC CONTROL DEVICES

- TYPE I BARRICADE
- TYPE II BARRICADE
- TYPE III BARRICADE
- CONE
- DRUM
- FLASHING ARROW PANEL (TYPE C)
- TYPE 'B' WARNING LIGHT
- STATIONARY SIGN
- PORTABLE SIGN
- WARNING FLAGS
- CRASH CUSHION
- CHANGEABLE MESSAGE SIGN
- TRUCK MOUNTED IMPACT ATTENUATOR (TMIA)
- POLICE
- FLAGGER

PAVEMENT MARKINGS

- CRYSTAL PAVEMENT MARKER
- YELLOW/YELLOW PAVEMENT MARKER
- CRYSTAL/RED PAVEMENT MARKER
- PAVEMENT MARKING SYMBOLS

PROJECT: W-5205X